



# NREL Buildings Program Overview

Roderick Jackson, Ph.D.  
Laboratory Program Manager  
Buildings Research  
November 12, 2019



Transforming Energy

through **Building Science and Integration**



## foresee™ Home Energy Management Software

Automating connected appliances and systems in a choreographed way saves energy, reduces strain on the grid, and could save homeowners up to \$9 billion on their energy bills.





# Multibuilding Energy Simulation and Optimization

ResStock™ is helping states, municipalities, utilities, and manufacturers identify which home improvements save the most energy and money

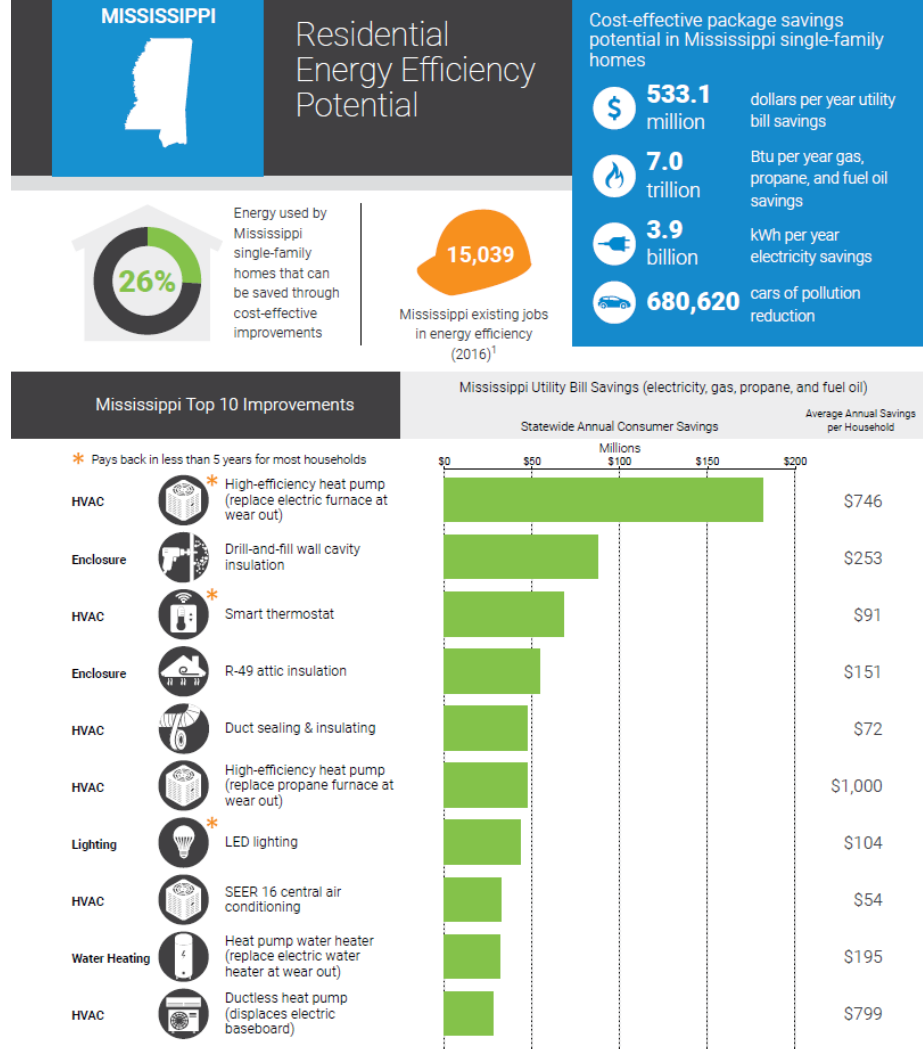


# ResStock Website

## Interactive web visualizations

- Housing characteristics
- Baseline consumption by end-use, fuel
- Savings and cost-effectiveness for upgrades

<https://resstock.nrel.gov/>





## Analytics Targeting Commercial Energy, Cost Savings

ComStock produces data-driven, physics-based simulation of the U.S. commercial building stock to achieve **unprecedented granularity in modeling** building energy use and demand





NREL's **URBANopt platform** and its underlying **physics-based analytics engine** support the design and optimization of urban districts and help plan the integration of high-efficiency, sustainable energy technologies community-wide.

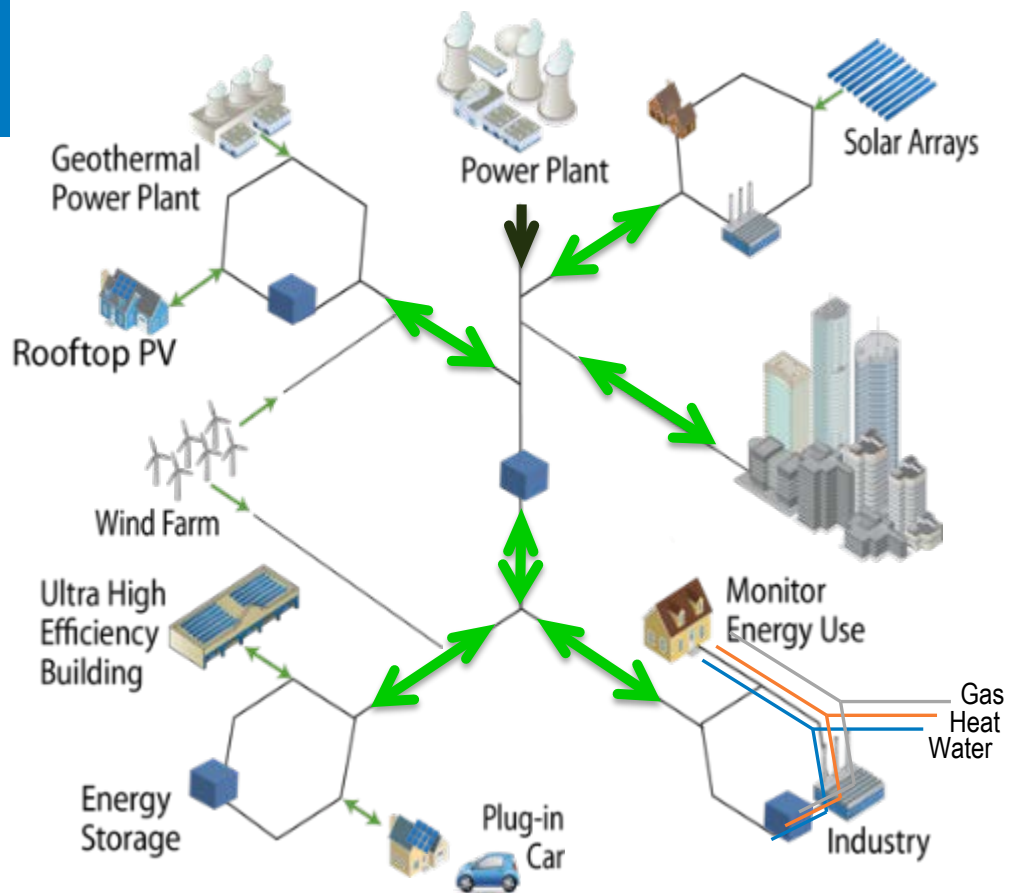
An aerial night view of a city, likely New York City, with numerous skyscrapers and city lights. Overlaid on the image is a network of glowing white arcs connecting various points across the city, representing a smart grid or interconnected buildings. The text "The Future Is Grid-Interactive Efficient Buildings" is overlaid on the bottom left of the image.

The Future Is  
Grid-Interactive **Efficient Buildings**

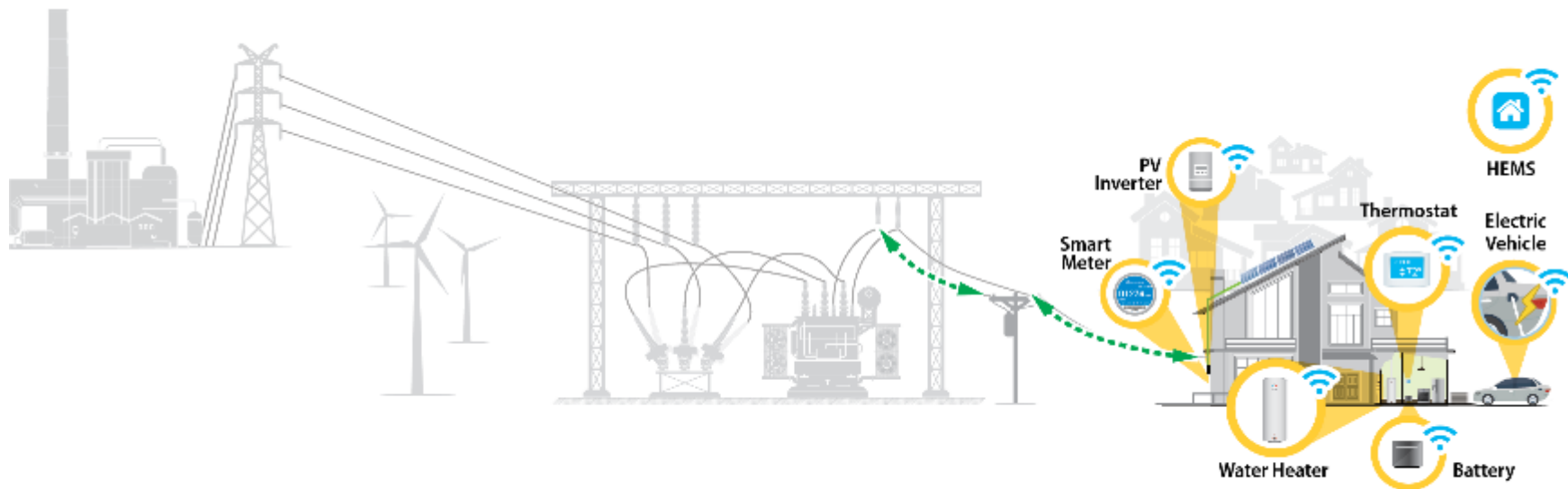


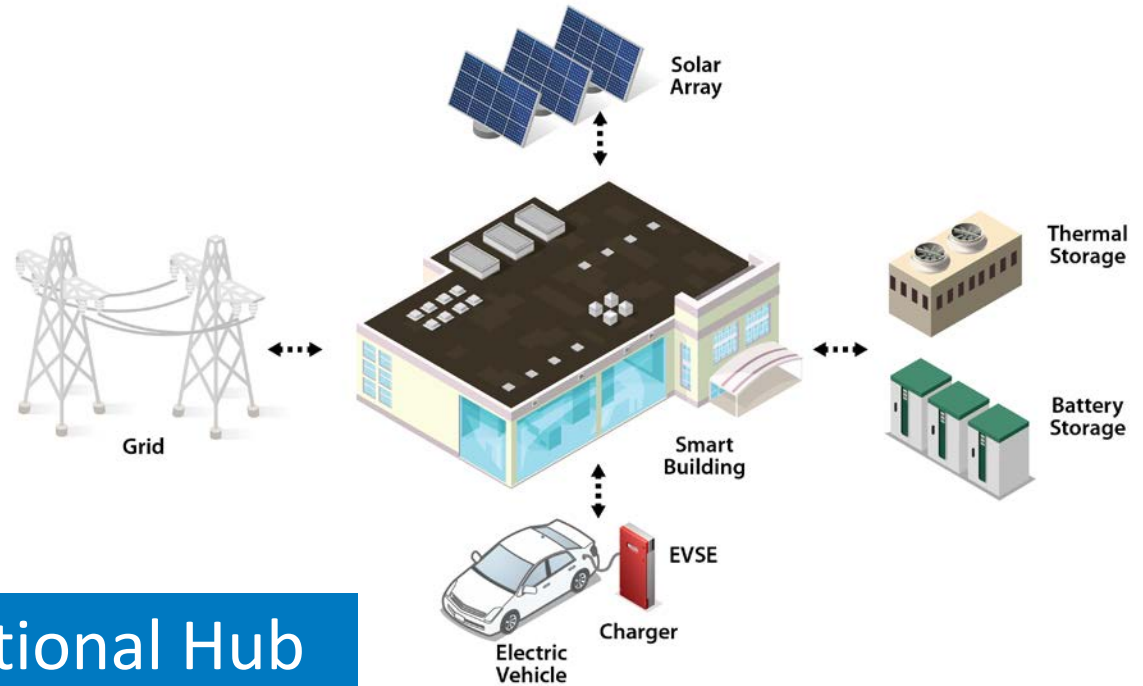
# The Energy Grid of the Future is Changing

Buildings  
comprise  
**75%**  
of current  
electrical demand



# How We Use Electricity is Changing





## Buildings: The Foundational Hub

Integrated systems with optimal design and operation.

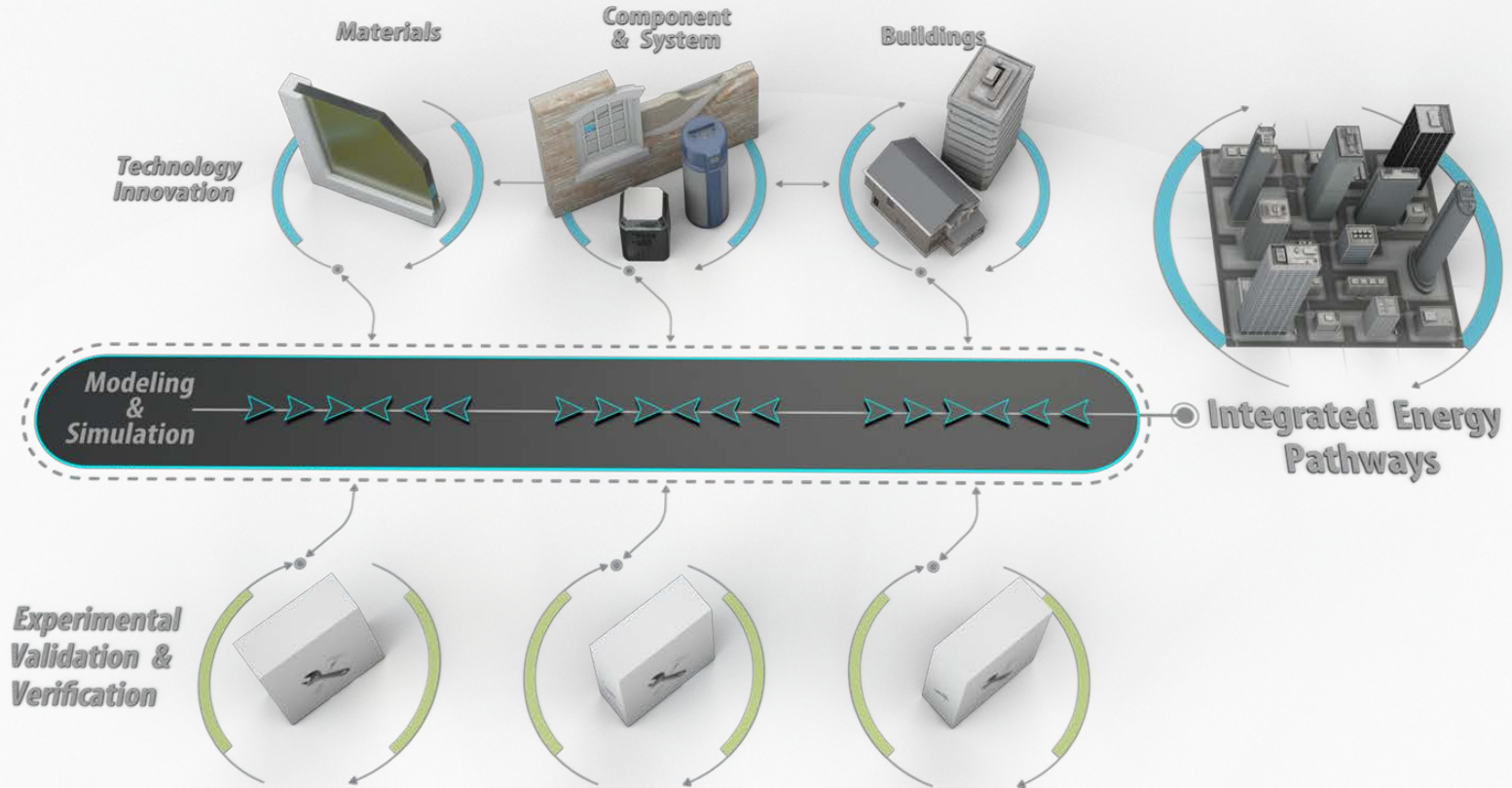
- Smart buildings, electric vehicles, solar energy, battery storage, thermal storage, can be optimized to address current industry needs.
- New materials and controls can enable optimal integration for the future



# Opportunities & Challenges

- Buildings can provide grid services such as reduced generation operation, generation capacity, transmission and distribution upgrades, and contingency reserves.
- Supply and demand diversity, which vary by climate, location, generation resource, market, and building type, drive spatial and temporal imbalances in the energy grid.
- “Behind the meter” solutions can be developed and optimized to provide grid services that reduce spatial and temporal energy imbalances; however, solutions must be integrated across diverse technologies, controls platforms, and systems.

# Integrated Strategy Enables Impactful Innovation





Beyond Efficiency:

Grid-Interactive **Efficient Buildings** Research

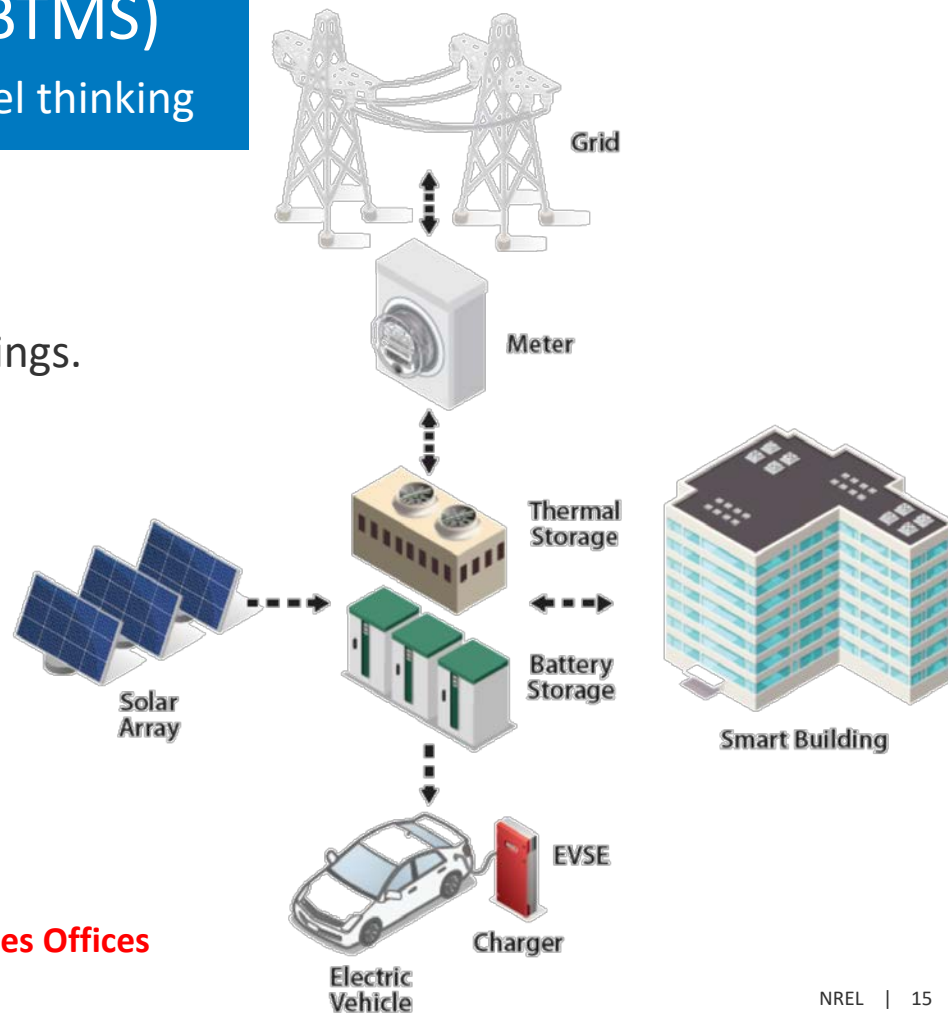
# Behind-the-meter storage (BTMS)

Early-stage research guided by system-level thinking

- **Buildings** are largest electrical load.
- **Electric vehicles** will be charged at buildings.
- **Photovoltaics** will be everywhere.

To mitigate the impact of these on the electric grid, we need flexibility:

- More intelligent controls
- **Thermal energy storage**
- **Electrochemical energy storage**



**A partnership between the Buildings, Solar, and Vehicles Offices**

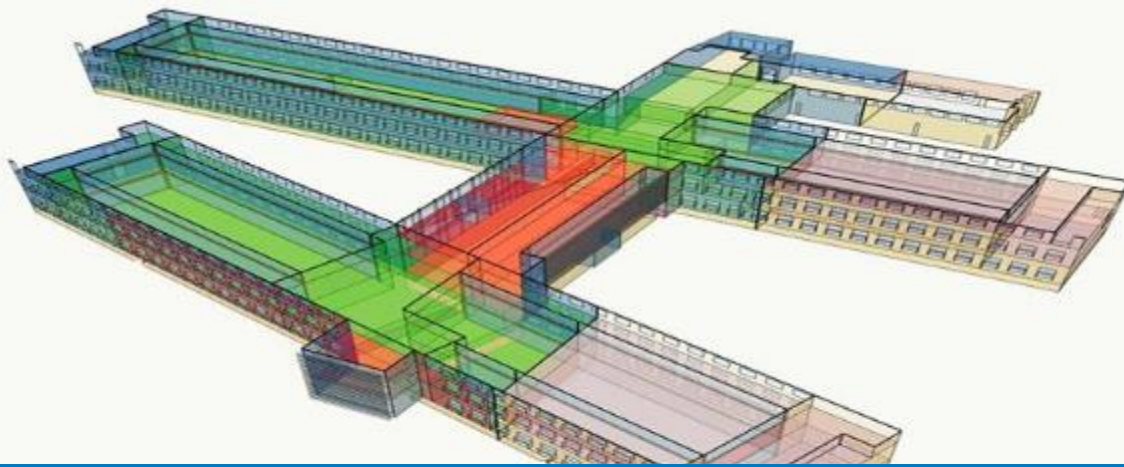


## Innovative Thermal Storage

Optimizes integration of advanced building-scale thermal energy storage technologies with other forms of:


- Energy storage
- Renewable energy
- Loads.





# Building Energy Simulation and Optimization

- Time Resolution
- Geo-spatial Resolution and Scale
- Operational versus Design Planning
- Technology and Building Scale

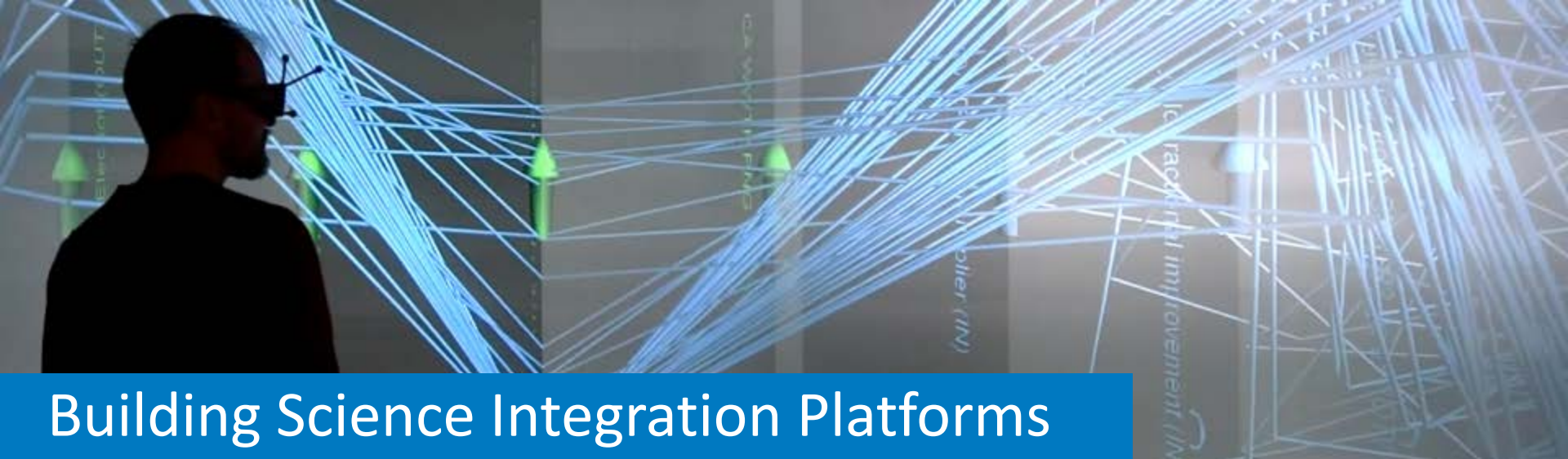
A photograph of an airplane cockpit from a rear perspective. Two pilots are seated at the controls, their hands on the yokes. The cockpit is filled with various instruments, dials, and control panels. The lighting is dim, with some overhead lights visible. A semi-transparent black text box is overlaid across the middle of the image.

Building Simulation

Coupling the Virtual and the Physical



# Connecting the Virtual and Physical



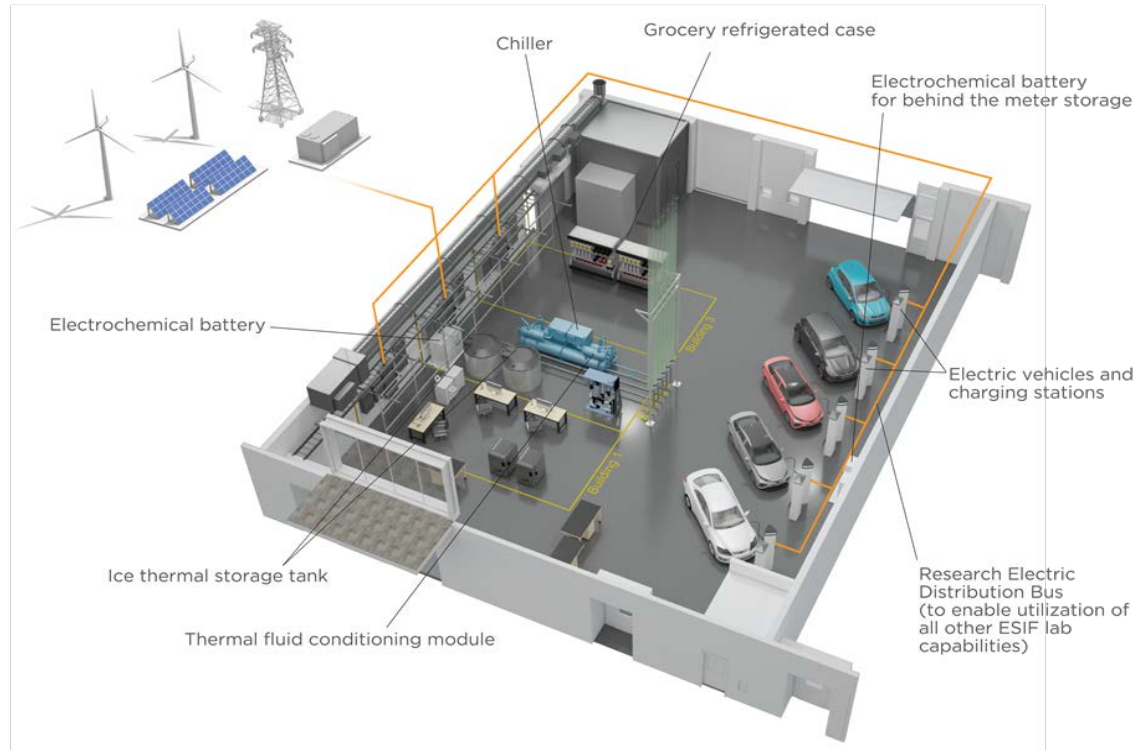
## Building Science Integration Platforms

“System-in-the-loop” R&D prove the science and scale of building energy:

- Flexibility
- Efficiency
- Interoperability with the grid.

# Energy Systems Integration

- Hardware-in-the-loop functionality for grid-interactive efficient buildings R&D
- Four key focus areas:
  - behind-the-meter energy storage,
  - flexibility for demand-side management,
  - intelligent efficiency
  - interoperability (connectivity, controls, communication).





## Building System Hardware in the Loop

### End-to-End Energy Ecosystem

- Residential loads hub that contains two residential electrical systems with associated smart home appliance suites
- Small commercial load hub that includes building electrical infrastructure with common outlets and mounting infrastructure for appliances and distributed energy resources
- Power-hardware-in-the-loop test bays for multi-inverters, small-scale commercial equipment, and cyber security networks
- Demonstration and testing of commercial PV inverters



# Energy Efficiency at Scale through Advanced Data Science

Unprecedented granularity in building simulation and modeling identifies residential and commercial building energy efficiency opportunities.

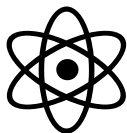


# End-Use Load Profiles: The Critical Link to the Future



Building stock characteristics database

+

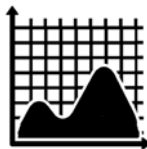


Physics-based computer modeling

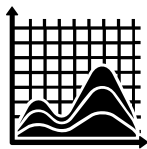
+



Calibration



Aggregate AMI

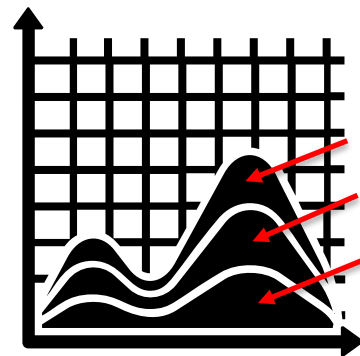


End-use profiles



BAS Trend logs

**End Use Load Profiles:**  
Allows for evaluating the impact of future scenarios and technologies



Plug Loads  
HVAC  
Refrigeration  
... etc.

- Multi-regional with national coverage
- Sub-hourly time resolution

  
Res  
Stock

  
Com  
Stock



NREL advances the science and engineering of energy efficiency, sustainable transportation, and renewable power technologies and provides the knowledge to integrate and optimize energy systems.

Thank you

[www.nrel.gov](http://www.nrel.gov)

[Roderick.Jackson@nrel.gov](mailto:Roderick.Jackson@nrel.gov)

**NREL is a national laboratory of the U.S. Department of Energy, Office of Energy Efficiency and Renewable Energy, operated by the Alliance for Sustainable Energy, LLC.**

