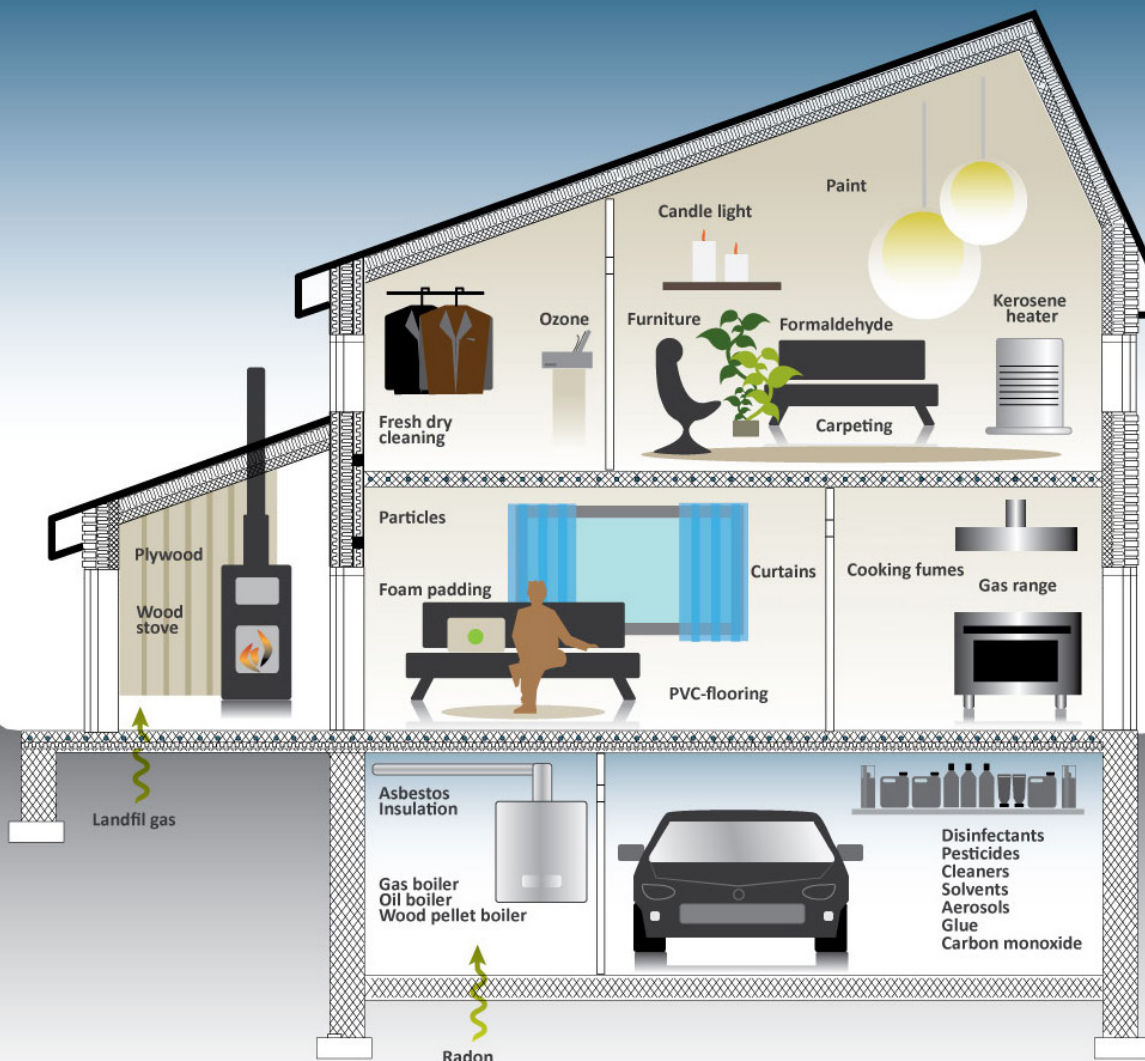


International Energy Agency

EBC Annex 68: Indoor Air Quality Design and Control in Low Energy Residential Buildings

Project Summary Report



International Energy Agency

EBC Annex 68: Indoor Air Quality Design and Control in Low Energy Residential Buildings

Project Summary Report

Edited by
Carsten Rode

© Copyright 2020 Technical University of Denmark

All property rights, including copyright, are vested in the Technical University of Denmark, Operating Agent for the EBC Annex 68 on behalf of the Contracting Parties of the International Energy Agency Implementing Agreement for a Programme of Research and Development on Energy in Buildings and Communities.

In particular, no part of this publication may be reproduced, stored in a retrieval system or transmitted in any form or by any means, electronic, mechanical, photocopying, recording or otherwise, without the prior written permission of the Technical University of Denmark.

Disclaimer Notice: This publication has been compiled with reasonable skill and care. However, neither the Technical University of Denmark nor the Contracting Parties of the International Energy Agency's Implementing Agreement for a Programme of Research and Development on Energy in Buildings and Communities, nor their agents, make any representation as to the adequacy or accuracy of the information contained herein, or as to its suitability for any particular application, and accept no responsibility or liability arising out of the use of this publication. The information contained herein does not supersede the requirements given in any national codes, regulations or standards, and should not be regarded as a substitute for the need to obtain specific professional advice for any particular application. EBC is a Technology Collaboration Programme (TCP) of the IEA. Views, findings and publications of the EBC TCP do not necessarily represent the views or policies of the IEA Secretariat or of all its individual member countries.

Participating countries in EBC: Australia, Austria, Belgium, Brazil, Canada, P.R. China, Czech Republic, Denmark, Finland, France, Germany, Ireland, Italy, Japan, Republic of Korea, the Netherlands, New Zealand, Norway, Portugal, Singapore, Spain, Sweden, Switzerland, Turkey, United Kingdom and the United States of America

This edition published in 2023 by the EBC Executive Committee Support and Services Unit.

Additional copies of this report may be obtained from:
EBC Executive Committee Support and Services Unit (ESSU)
C/o AECOM Ltd
The Colmore Building
Colmore Circus Queensway
Birmingham B4 6AT
United Kingdom
www.iea-ebc.org
essu@iea-ebc.org

Cover picture: An example of indoor air pollution sources in a typical dwelling

Source: Technical University of Denmark

Contents

Project Summary	1
Project Outcomes	3
1. Background	3
2. Objectives	6
3. Activities and deliverables	7
4. Outcomes	8
Project Participants	19
Project Publications	20
EBC and the IEA	21

Project Summary

In many countries, new dwellings or deeply renovated existing dwellings are designed to be energy efficient, and have airtight structures. This leads to a risk of high indoor pollutant loads due to activities and emissions from materials in contact with indoor air. Ventilation must be dosed at the right volume of clean air, efficiently distributed in the occupied zone with proper scheduling in order to keep indoor pollutant concentrations low, while not increasing the energy need. Building designers, contractors, owners and operators, and decision makers need the newest knowledge on how to operate ventilation to achieve this. Thus the EBC project, 'Annex 68: Indoor Air Quality Design and Control in Low Energy Residential Buildings' has focused on new and existing residential buildings, although it should be underlined that many findings may also be relevant to other building types. At the project outset, existing indicators for indoor air quality (IAQ) were reviewed and indicators were then defined that would specifically facilitate the project subtasks. The IAQ indicators to be studied were documented in a report, which collected state of the art information and suggested a principle in the form of a 'dashboard' on how to balance the combination of the most significant among many pollutants to be

considered. The dashboard also highlighted the energy performance aspect.

A main result of the project is an easy to understand and practically applicable collection of experiences with design and operational strategies to achieve optimal energy performance and high IAQ in residential buildings. The collection is intended for those involved in the construction and maintenance of buildings. Furthermore, the project presents a modelling framework, and design tools suitable for integrated and coordinated design of buildings with low energy consumption and high IAQ.

With regards to pollutants in buildings, data and models have been applied on sources and sinks of pollutant emissions to estimate the net pollutant loads over time under realistic environmental conditions. This is supported by databases on the properties of materials with respect to pollutant emissions. Finally, field tests and case studies were documented for different climatic zones, as well as methodologies to carry out such testing. Specifically, this activity targeted industry partners, building owners and operators.

The project was carried out with contributions from researchers from 39 research institutions from 15 countries worldwide,

while one participant was a global enterprise that supplies building products and solutions in many areas. Several local stakeholders, such as consultants, HVAC manufacturers and associations, have been visitors to the project when expert meetings were held semi-annually in different countries. Meetings were usually planned to be held in conjunction with relevant conferences such as those convened by AIVC and ASHRAE, and the Indoor Air, IBPC and IAQVEC conferences. The project has also fostered input to meetings in the interest group 'CHAMPS' on Combined Heat, Air, Moisture and Pollutant Simulation, which meets annually in different places of the world. An important lead from the project to policy makers is to facilitate the possibility by legislation that residential buildings may be operated flexibly and intelligently with regards to demand control of building ventilation in a manner that considers realistic hygrothermal and pollutants loads in buildings. Furthermore, the project has highlighted the need for more quality management since traditional and novel mechanical ventilation concepts such as presented in this project all have in common that quality assurance during design, construction and operation is crucial for success, i.e. high IAQ and comfort while minimizing energy use. Consequently, a framework for quality assurance and inspection is needed.

Project duration
2016 - 2020 (completed)

Operating Agents
Prof Carsten Rode
Department of Civil Engineering
Technical University of Denmark
Nils Koppel's Allé, Building 402
2800 Kgs. Lyngby
Denmark
car@byg.dtu.dk

Participating countries
Austria, Belgium, Canada, P.R. China, Czech Republic, Denmark, France, Germany, Japan, R. Korea, the Netherlands, New Zealand, Norway, UK, USA
Observers: Estonia

Further information
www.iea-ebc.org

Project Outcomes

Background

The rationale for implementing the EBC project, 'Annex 68: Indoor Air Quality Design and Control in Low Energy Residential Buildings' stems from the fact that buildings will have to be optimized in the future to come as close as possible to net zero energy consumption. This means that ventilation in particular will also be reduced to what is strictly necessary, while the quality of the indoor air must not be sacrificed. It is therefore necessary to adopt and demonstrate an integral method for optimization in ventilation management that takes into account such elements as the sources, sinks and transport of relevant pollutants present in buildings, including the emissions of volatile organic compounds (VOCs) from building construction products. Building designers, contractors, owners and operators as well as decision makers need the newest knowledge on how to operate ventilation to achieve this.

New dwellings or deeply renovated existing dwellings are designed to be energy efficient, and have airtight structures. This leads to a risk of high indoor pollutant loads due to activities and emissions from materials in contact with indoor air. Ventilation must be dosed at the right volume of clean air, efficiently distributed in the occupant zone and with proper scheduling in order

to keep indoor pollutant concentrations low, while not increasing the energy need. Building designers, contractors, owners and operators, and decision makers need the newest knowledge on how to operate ventilation to achieve this.

Upon starting the project, a technology readiness analysis indicated that there are many pollutants for which we still had only little information; some of the information we have is not up-to-date, so it does not sufficiently pertain to contemporary products and conditions; and there was only very scarce information about combined effects with temperature, humidity and ventilation levels on indoor pollution levels. Furthermore, more global approaches were thought to be needed that consider indoor pollutants mainly by proxies such as carbon dioxide (CO₂) or humidity, while modelling of pollutants has been hampered by the lack of data about the pollutants, and lack of threshold values. Indoor pollutants were not included directly in building energy simulation models. Appropriate sensors for relevant pollutants were missing, although some are under development. Application, experience and design knowledge in the combined assessment of energy performance and indoor air quality (IAQ) optimization were expressed as being

important, but appeared to be too scarce, and generally not consolidated.

Objectives

Thus, the objectives of EBC Annex 68 have been to:

- Develop guidelines for design and control strategies for buildings with low energy consumption that will not compromise the quality of the indoor air. The operational parameters treated are the means and control of heating, ventilation and moisture conditions, and their optimal combination.
- Setup the performance indicators striving to obtain high energy performance and an optimal IAQ.
- Collect, combine and perfect the tools that will be necessary to help designers and managers in achieving the first objective above.
- Benefit from the latest advances in sensor and control technology, in order to identify methods to improve IAQ while ensuring minimum energy consumption for operation.
- Gather existing data and provide new data on indoor pollutants and their properties with respect to temperature, humidity and air transfer that will be required for the above analysis.
- Identify and analyse relevant field and case studies in which the high energy performance and optimal IAQ can be examined and optimized.
- Disseminate the knowledge acquired about each of the above results.

Rather than developing new knowledge from scratch, the project has mainly aimed to collect, process and combine existing knowledge from different scientific communities, such as those relating to ventilation, chemical emissions from construction products, hygrothermal phenomena in buildings, materials and thermal and air flow modelling / simulation of buildings.

The project has sought to contribute to the following themes of the EBC strategic plan 2014-2019:

- Theme #1: Integrated planning and building design, e.g. regarding establishment of knowledge about the design process for zero or low energy buildings with integrated information about the function of building envelopes (e.g. the materials) and the building energy systems (e.g. ventilation systems)
- Theme #2: Building energy systems concerning the optimal operation considering building / user / system interactions
- Theme #3: Building envelope regarding design and multiple function of the envelope.

In fact, the project has linked back to EBC Annex 18 on demand controlled ventilation, and has complemented other more recent EBC projects dealing with ventilation. Throughout its duration, it has been a contributor to EBC Annex 5: Air Infiltration and Ventilation Centre (AIVC).

Activities and deliverables

Definition of indicators

An important obstacle to integrating energy and indoor air quality (IAQ) strategies into building design and optimization has been the lack of a single index that would quantitatively describe IAQ and allow comparison with the indices describing the energy consumption. Such an index would also make it possible to quantify the advantages of different methods for achieving high IAQ and compare them in parallel with the consequences for energy

and greenhouse gas emissions. With this activity, the existing correlations between IAQ and health care costs were examined, with an index considered useful if it properly accounts for the benefits of IAQ and energy in the design and the operation of buildings. In particular, the index should include the additional energy consumption necessary to improve IAQ compared to current practice, such as the increase in fan consumption induced by air change rates or the use of filters, particulate / gas or air purifiers.

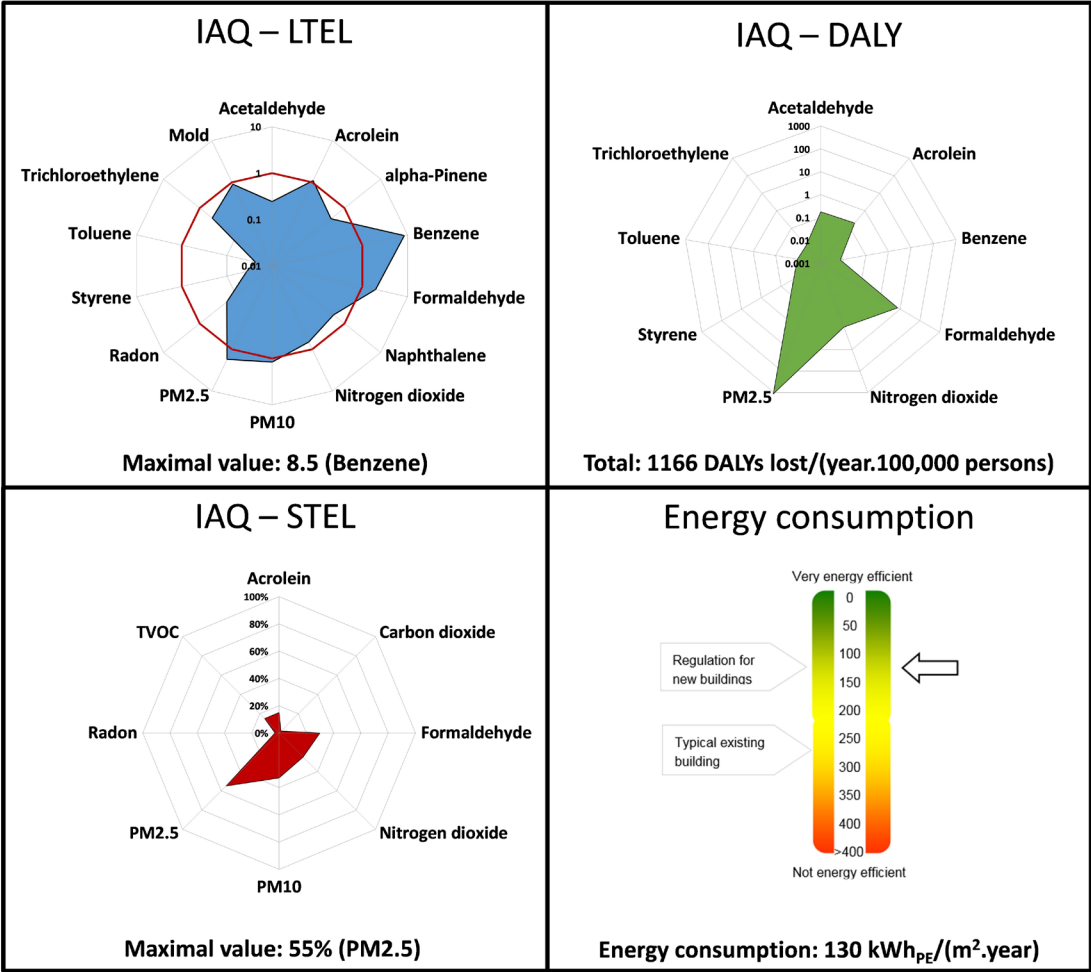


Figure 1. Graphic summary of indicators
Source: Université La Rochelle

Figure 1 is a graphical summary presenting the main points discussed in this first activity of the project, namely:

- Do residential buildings with low energy consumption have a poorer IAQ?
- What are the target pollutants to monitor to assess IAQ in low-energy residential buildings?
- How should the IAQ level be quantified?
- Can we combine the IAQ and energy indicators into a single indicator?

Figure 1 also presents the IAQ / Energy dashboard proposed by the project. Three IAQ indices were proposed based on Exposure Limit Values (ELVs) or DALY (Disability-Adjusted Life Years). The first index is the IAQ-STEL index (Short-Term Exposure Limit), which represents the risks associated with short-term exposure to pollutants. Its calculation is based on ELVs for short-term exposure and gives the frequency that the pollutant concentration exceeds those ELVs over a period of time (hours or days) depending on the pollutant ELV definition. Regarding the risks associated with long-term exposure to pollutants (over weeks or years), two indices are considered: the IAQ-LTEL index (Long-Term Exposure Limit) is calculated as the ratio of the pollutant concentration over the ELV for long-term exposure, while the IAQ-DALY index is calculated using DALYs. The highest values separately for IAQ-STEL and IAQ-LTEL indices are selected to form multipollutant indices. IAQ-DALY is derived by calculating DALYs for all pollutants and summing them up. The IAQ-STEL and IAQ-LTEL indices indicate whether the

concentration of a pollutant is above or below its exposure limit. IAQ-DALY provides information on the burden of disease that is associated with the exposure. Thus, it provides an estimate of burden for the society that can be economically quantified that are relevant for policy and decision makers, and the two approaches and three indices are complementary. Along with this IAQ signature, the building energy consumption is provided to illustrate the energy consequences of IAQ remediation. All these points are presented in the AIVC report CR17 (Abadie and Wargocki, 2017) available for download at www.aivc.org.

Pollution load in residential buildings

One of the obstacles to integrating energy and IAQ strategies has been the lack of reliable methods and data to estimate the pollution load in residential buildings in the same way as heating and cooling loads are routinely estimated. This project activity has involved collecting existing data and to some extent providing new data on the transport, retention and emission properties of chemicals in new and recycled materials under the influence of heat, airflow and humidity conditions. The collection of laboratory test results at the material and building scale has been part of this study. Specifically, the results were collected and analyzed from tests for emission of volatile organic compounds (VOCs) under various conditions of temperature, humidity and airflow, since prior to the project such data did not generally exist in the context of combined exposures.

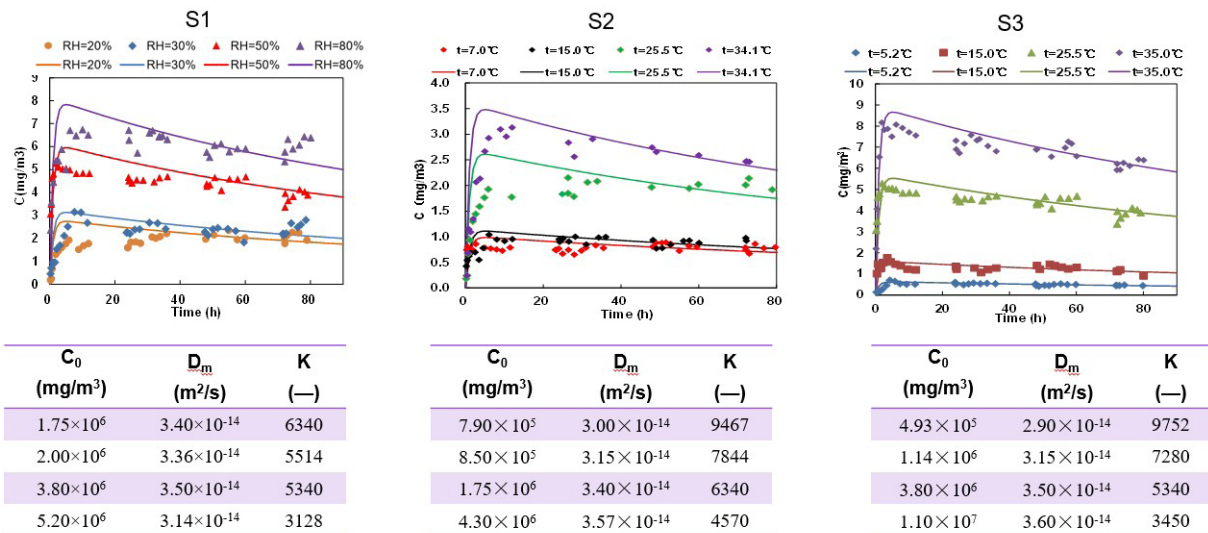


Figure 2. Effects of temperature and relative humidity on formaldehyde emissions from a medium density fibreboard (MDF) panel
Source: Technical University of Denmark

The main developments of the activity on pollution loads in residential buildings have been:

- Analysis of the coupled or uncoupled effects of temperature and humidity on the emission of various pollutants (formaldehyde, benzene, etc) for various materials (MDF, plaster, etc) such as illustrated in Figure 2.
- A procedure for defining reference buildings for the evaluation of pollutant loads, IAQ and energy analysis for different countries / climates.
- A method and procedure for using a scale 1 test chamber to assess the effects of pollutant sources and sinks, ventilation and air cleaning on IAQ have been developed. Two cases were defined with experimental data, one for one single source (particle board) and the other for a room with vinyl flooring,

ceiling tiles, painted plaster panels and an office cabinet.

- In order to assess the impact of VOC emissions from construction materials on the indoor pollution load beyond chamber test conditions and test period standard, emission source models have been developed in the past. However, very little data is available for the required parameters of these models, including the initial concentration, the diffusion coefficient in the material, the partition coefficient and the coefficient of mass transfer by convection. Therefore, a procedure has been developed to estimate model parameters using VOC emission data from standard tests in small chambers.

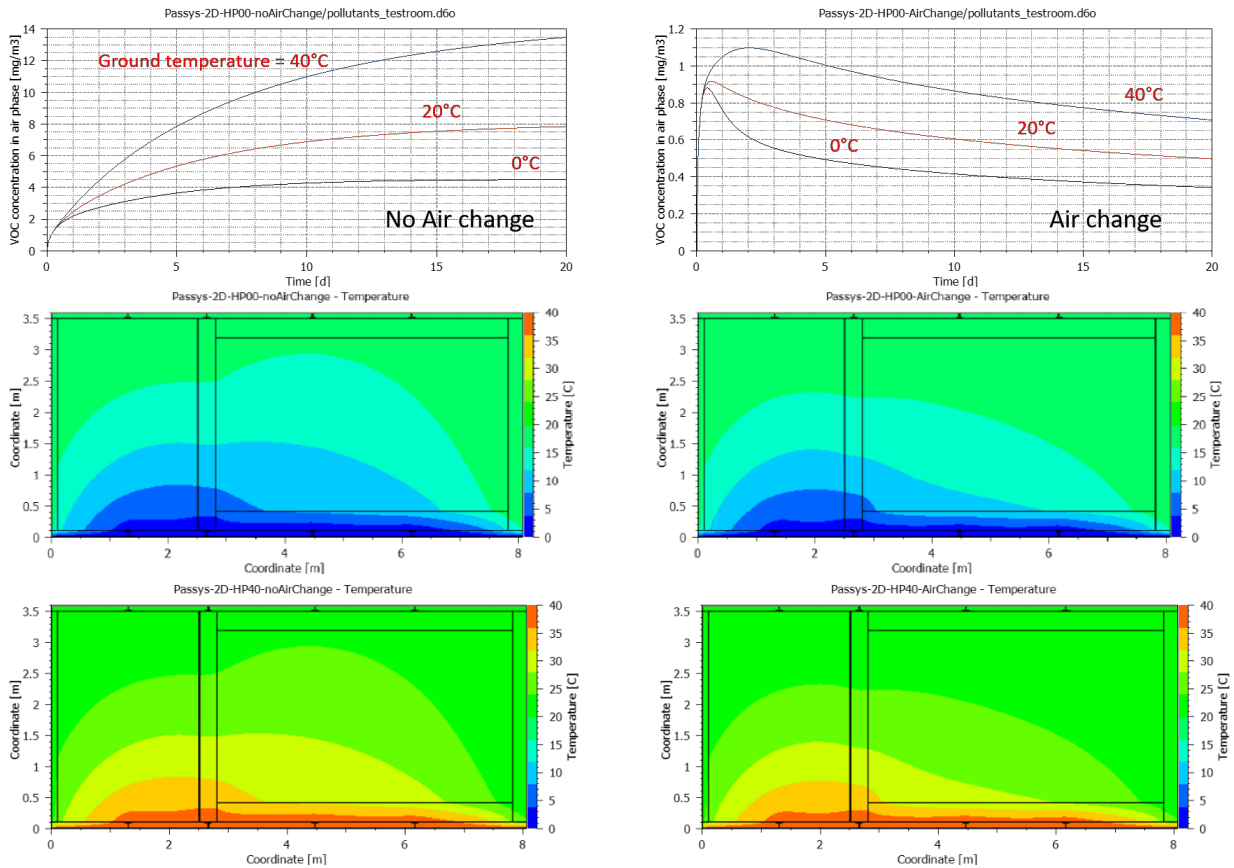


Figure 4. Test case - Modelling of the evolution of the volatile organic compound (VOC) concentration coming from the floor at different temperatures, with and without air exchange. Source: TU Dresden

Modelling - analysis and classification

Previously, many models were developed in the field of dynamic thermal simulation of buildings (e.g. building design, life cycle analysis, and energy efficiency improvement). However, prior to the project knowledge was insufficient to predict the combined effects of hygrothermal conditions and chemical reactions on species and indoor pollution concentrations. In light of recent developments on the importance of secondary emissions such as indoor and surface air chemistry initiated by ozone, an approach for modelling the effects of combined heat, air, humidity and pollutant

transport (CHAMPS - Combined Heat, Air, Moisture and Pollutant Simulation) and their impact on energy and IAQ was considered to be necessary. The objective of the modelling activity has thus been to review, make gap analysis and classify existing models and standards. This has involved collecting and developing validated reference cases using modern tools and methods of analysis of the whole building to predict hygrothermal conditions, absorption and transport of humidity and chemicals and energy consumption in buildings. The overall modelling of the building was carried out by considering the indoor air and the

building envelope, the users of the building and the technical management systems of the building. The main contributions of the project's modelling activity have been:

- a global analysis of the practical integration of building performance simulation tools.
- a reference case with description; of the problem, input parameters and solution, which was the subject of a common exercise between the participants (Figure 4);
- classification of the tools available according to their strengths and weaknesses;
- testing of selected tools and their possible combinations (co-simulation);
- features and implementations required following the analysis of the lack of available tools;
- proposals for improving quality assurance standards in the development of simulation tools.

Particular attention has been paid to the integration of the transport and diffusion equations of VOCs in materials. In particular, a so-called similarity approach has been pursued with respect to the sorption of water vapour in order to be able to generate data on the diffusion and partition coefficient for the VOC - material pairs (which are few in number) from the databases of data on the hygroscopic properties of existing materials. This analysis showed correlations between these parameters (Figure 5).

Building design and control strategies

This project activity has been based in particular on the results of the activities from other parts of the project on IAQ indicators and measurements, models and databases on pollution and emissions, and the results of in-situ measurements, as well as on existing knowledge to develop optimal and practically applicable strategies for design and control to promote high IAQ in residential buildings.

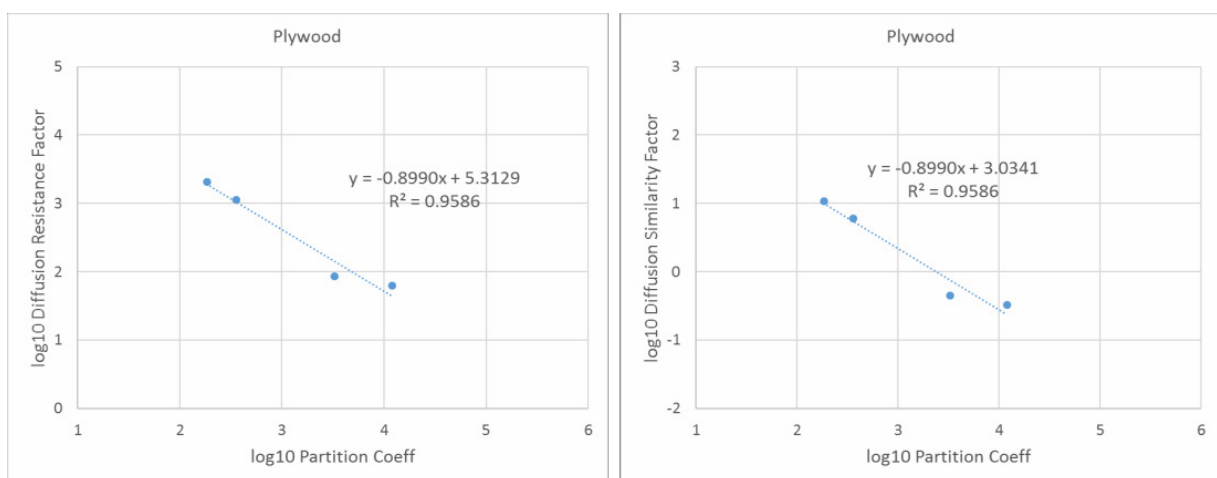


Figure 5. Similarity analysis for plywood.
Source: TU Dresden

The strategies consider IAQ requirements based on current standards, as well as new measures developed based on health effects. Optimal strategy can be understood here as strategies that take into account the energy performance of the building, comfort and healthy conditions. Matrixes of different strategies should be created to assess the possibilities of win-win solutions (excellent IAQ with low energy consumption), as well as other alternatives that will ensure high IAQ. The use of models and databases developed in the project has allowed new paradigms to be established for the local and multi-scale management of air quality and energy, including modulated ventilation (by humidity, CO₂ or other pollutants) taking into account the transport of chemical compounds to and from the interior atmosphere. The activity has considered recent advances in sensor

technologies to find ways to optimize IAQ without compromising energy efficiency. On the energy side, the activity has sought to establish correlation factors between, on the one hand, pollution loads in buildings and the methods to mitigate such loads, and energy consumption on the other hand. The objective of the project’s activity on building design and control strategies has been to bring together the results and approaches from other parts of the project, and to then place these in the context of existing technical knowledge. The original purpose of this activity was to devise optimal and practically applicable design and control strategies. However, as the project progressed, it became evident that it was not feasible to develop a precise set of 'recommended strategies'. Rather the activity was then focused on collecting

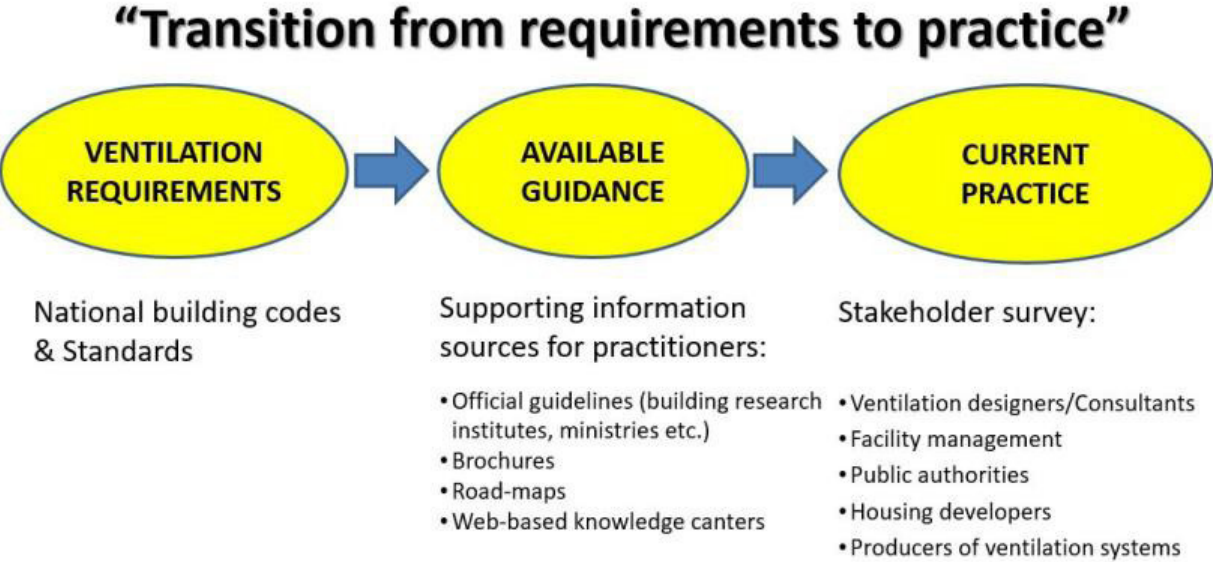


Figure 6. Sources of information used when studying the transition from requirements to practice. Source: Technical University of Denmark

and documenting the variety of existing approaches used in practice by all project participants. To this end, two main themes were followed:

- transition from theory to practice: a bibliographic study and series of interviews with key stakeholders in the buildings sector in relation to the implementation of international standards, national standards and building codes, as well as numerous brochures, guides and existing web pages (Figure 6), and
- inspiration for design and operation: case study sheets structured according to 'objectives, description and methods',

'main results and findings', 'conclusions and lessons', and 'further reading'.

In-situ measurements and case studies

The activity on in-situ measurements and case studies has identified and investigated relevant case studies through literature reviews and measurement campaigns conducted through field tests of buildings to provide data for validation of other project activities. Several sites and climates have been studied, and in-situ tests have included buildings declared to be energy efficient new buildings, or recently renovated ones. Field tests have focused on testing

Chapter	Case study	Design			Construction, Commissioning & Operation	
		Assessment methods	Assessing ventilation concepts	Novel ventilation solutions	Quality assurance	Assessing in-use performance
3.1	Alternative ducting options for balanced mechanical ventilation systems in multifamily housing					
3.2	Ambient air filtration in highly energy efficient dwellings with mechanical ventilation					
3.3	Development of a compact ventilation system for facade integration					
3.4	Volatile Organic Compounds exposure due to Floor heating systems versus Radiator heating					
3.5	Control strategies for mechanical ventilation in Danish low-energy apartment buildings					
3.6	Response of commercially available Metal Oxide Semiconductor Sensors under air polluting activities typical for residences					
3.7	Impact of multi zone air leakage modelling on ventilation performance and indoor air quality assessment in low-energy houses					
3.8	Towards a better integration of indoor air quality and health issues in low-energy dwellings					
3.9	List of key pollutants for design and operation of ventilation in low-energy housing					
3.10	Definition of a Reference Residential Building Prototype for Evaluating Indoor Air Quality and Energy Efficiency Strategies					
3.11	Temperature dependent emissions of Volatile Organic Compounds from building materials					
3.12	Detailed modelling of Indoor Air Quality to improve ventilation design in low energy houses					
3.13	Mechanical ventilation system in deep energy renovation of a multi-story building with prefabricated modular panels					
3.14	Simplifying Mechanical Ventilation with Heat Recovery systems					
3.15	Design of room-based ventilation systems in renovated apartments					
3.16	Introduction to the Coupled Heat, Air, Moisture and Pollutant Simulation CHAMPS modeling platform					
4.1	House owners' experience and satisfaction with Danish Low-energy houses - focus on ventilation					
4.2	Development and test of quality management approach for ventilation and indoor air quality in single-family buildings					
4.3	Applications of the Promevent protocol for ventilation systems inspection in French regulation and certification programs					
4.4	Long-term durability of humidity-based demand-controlled ventilation: results of a ten years monitoring in residential buildings					
4.5	Practical use of the Annex 68 Indoor Air Quality Dashboard					
4.6	Performance evaluation of Mechanical Extract Ventilation (MEV) systems in three 'low-energy' dwellings in the UK					
4.7	Indoor air quality in low energy dwellings: performance evaluation of two apartment blocks in East London, UK					
4.8	Continuous-commissioning of ventilation units in multi-family dwellings using controller data					

- Addressed topics:**
- Health & Comfort
 - Spatial requirements
 - Cost & Energy consumption
 - Refurbishment
 - Commissioning
 - Quality of installation
 - User satisfaction

Figure 7. Overview of the project case studies.
Source: Technical University of Denmark

and demonstrating in practice how low energy operational strategies can be used alongside with creating healthy indoor environments. Test buildings with existing and new ventilation strategies that were identified in the activity on building design and control strategies were incorporated to the maximum possible extent. Testing included investigation of new ventilation principles in energy-efficient residential buildings with strong airtightness, increased thermal insulation, use of materials and also new residential behaviours. Field trials were carried out in collaboration with industrial partners taking part in other project activities and with building owners. This

involved engineers and owners / operators of the buildings studied. The results of the measurements were used for the common exercise of the project's modelling activity and to provide input to the guidelines developed in the activity on building design and control strategies.

Specifically, the activity on in-situ measurements and case studies comprised the following elements:

- analysis of the metrology resources necessary for the assessment of IAQ in residential buildings;
- carrying out experiments to provide validation data for digital models - three levels of increasing complexity have



Figure 8. Spaces of the house (living room and dining room) during the experiment.
Source: Ghent University

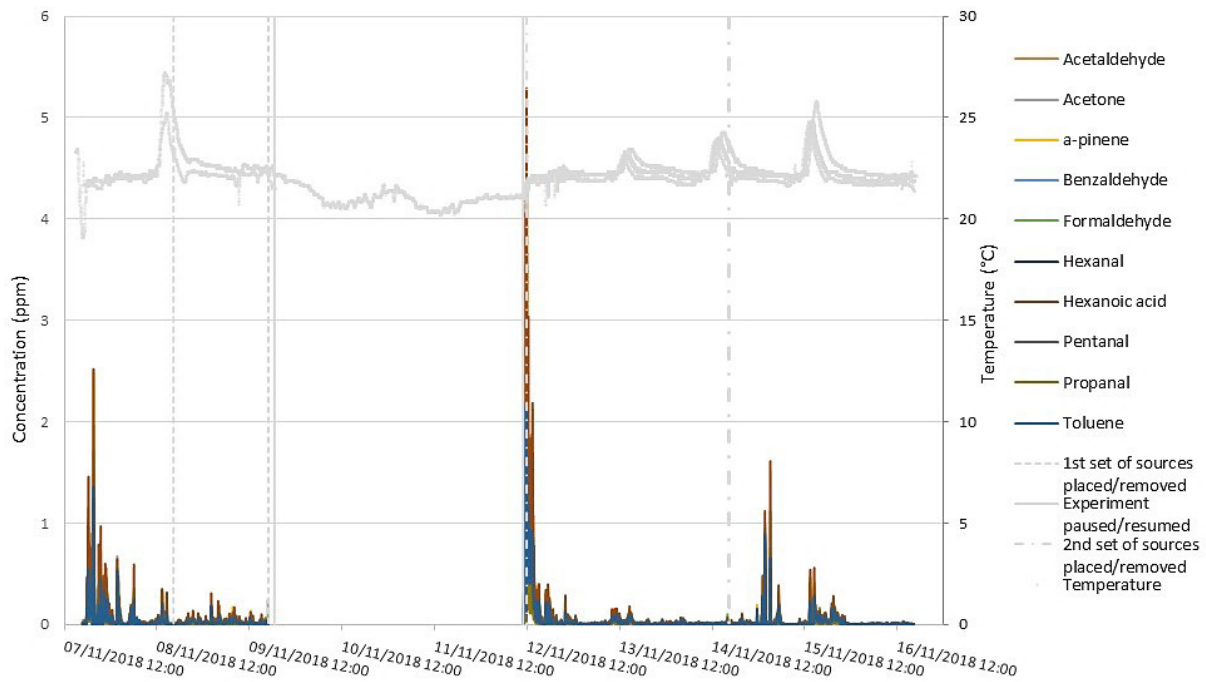


Figure 9. Evolution of the volatile organic compound (VOC) concentration monitored in the house with Sift-MS (mass spectrometry) after placement of VOC sources in the form of oriented strand boards (OSBs) and an air freshener.
Source: Ghent University

been defined: an outdoor test cell, a small student studio, and an occupied house (Figure 8 and Figure 9);

- compilation of results of IAQ measurements in residential buildings with low energy consumption in the form of summary sheets including overall building data (location, geometry, structure of the envelope, thermal and ventilation systems), as well as information concerning the measurement and levels of pollutant concentrations in these buildings.

Outcomes

The project produced the following results:

- A clear definition and presentation in a 'dashboard' of indoor pollution sources

to be considered when assessing the impacts of chemical emissions and other pollutants in dwellings. The dashboard balances these considerations with a presentation of the energy of performance of a building under study.

- A tool was developed to guide collection of the most relevant indoor pollutant sources according to the selections made in the activity on definition of indicators and to present them graphically on the dashboard for overview and prioritization.
- New data on chemical emissions from building products as they are influenced by temperature and humidity. A paradigm has been developed according to a so-called 'similarity approach', whereby

data from for instance moisture transfer performances of building products can be used also in estimation of their properties for storage and emissions and chemical compounds.

- Three common exercises were described and documented in relation to chemical emissions from building products and modelling thereof. Data from these exercises have value in their own right, but can also be used in training of future experts in estimating and assessing the coupled transport phenomena involved with pollution processes in indoor environments.
- A platform has been set up for modelling/ simulation of whole building performance of the complex and interacting processes of energy/ thermal assessment of buildings with their moisture, airflow and chemical/ atmospheric conditions. The platform was tested and documented through its use in a common exercise whereby conditions in a so-called PASSYS reference test cell were computed.
- A survey has been carried out comprising a varied set of stakeholders (architects and ventilation designers, facility managers, property developers, and representatives of public authorities), who have expressed their opinions on challenges and desirable possibilities for designing and implementing advanced ventilation systems and their control for optimal operation with respect to energy use and provision of good indoor environments. A total set of 24 themes

have been discussed in this respect, many of which represented solutions that were exemplified as realized cases studies from which learnings could be collected.

- An overview was made of test methodologies to use in measurements campaigns / experiments to assess indoor climate and ventilation performance.
- A collection of field test of indoor climate performance of test chamber, and controlled field tests where emissions of pollutants and hygrothermal conditions were studied under varying exposures and operational conditions with regards to materials and ventilation.
- A collection of case studies from high performance buildings in seven places spread in different geographies of the world. Apart from energy use and standard indoor climate parameters, the buildings were also characterised for their chemical indoor environments. The cases have been indexed as an archive from which valuable data can be retrieved for research.

While EBC Annex 68 has concentrated on collecting fundamental inputs in its field of research, it has led to the formulation of the EBC project 'Annex 86: Energy Efficient Indoor Air Quality Management in Residential Buildings', which has taken the Annex 68 results further with a focus on practical and intelligent implementation of ventilation systems in residential buildings by use of smart components and materials.

Project Participants

Country	Organisation
Austria	University of Innsbruck
Belgium	Ghent University
Canada	Health Canada British Columbia Institute of Technology
P.R. China	Nanjing University
Czech Republic	Czech Technical University of Prague
Denmark	Technical University of Denmark
France	La Rochelle University University of Savoy Saint-Gobain Research
Germany	Dresden University of Technology

Country	Organisation
R. Korea	Korea Institute of Civil Engineering and Building Technology
the Netherlands	Eindhoven University of Technology
New Zealand	Building Research Association of New Zealand
Norway	Norwegian University of Science and Technology Norwegian Institute for Wood Technology Norwegian University of Life Sciences
UK	University College London
USA	Syracuse University

Project Publications

1. Paralovo S.L., Indoor Air Quality Design and Control in Low-Energy Residential Buildings, Subtask 5: Field Measurements and Case Studies - Appendix to Final Report: Case Studies, October 2020
2. Paralovo S.L., Indoor Air Quality Design and Control in Low-Energy Residential Buildings, Subtask 5: Field measurements and case studies, October 2020
3. Kolarik J., Rojas-Kopeinig G., Indoor Air Quality Design and Control in Low-Energy Residential Buildings, Subtask 4: Current Challenges, Selected Case Studies and Innovative Solutions Covering Indoor Air Quality, Ventilation Design and Control in Residences, October 2020
4. Qin M., Zhang J., Indoor Air Quality Design and Control in Low-Energy Residential Buildings, Subtask 2: Pollutant Loads in Residential Buildings (Common Exercises), October 2020
5. Grunewald J., Indoor Air Quality Design and Control in Low-Energy Residential Buildings, Subtask 3: Modelling of Energy Efficiency and IAQ - Review, Gap analysis and Categorization, October 2020
6. Qin M., Zhang J., Indoor Air Quality Design and Control in Low-Energy Residential Buildings, Subtask 2: Pollutant Loads in Residential Buildings, October 2020
7. Abadie M.O., Wargocki P., Indoor Air Quality Design and Control in Low-Energy Residential Buildings, Subtask 1: Defining the Metrics, September 2017

EBC and the IEA

The International Energy Agency

The International Energy Agency (IEA) was established in 1974 within the framework of the Organisation for Economic Co-operation and Development (OECD) to implement an international energy programme. A basic aim of the IEA is to foster international co-operation among the 31 IEA participating countries and to increase energy security through energy research, development and demonstration in the fields of technologies for energy efficiency and renewable energy sources.

The IEA Energy in Buildings and Communities Programme

The IEA co-ordinates international energy research and development (R&D) activities through a comprehensive portfolio of Technology Collaboration Programmes. The mission of the IEA Energy in Buildings and Communities (IEA EBC) Programme is to develop and facilitate the integration of technologies and processes for energy efficiency and conservation into healthy, low emission, and sustainable buildings and communities, through innovation and research. (Until March 2013, the IEA EBC Programme was known as the IEA Energy Conservation in Buildings and Community Systems Programme, ECBCS.)

The R&D strategies of the IEA EBC Programme are derived from research drivers, national programmes within IEA countries, and the IEA Future Buildings Forum Think Tank Workshops. These R&D strategies aim to exploit technological opportunities to save energy in the buildings sector, and to remove technical obstacles to market penetration of new energy efficient technologies. The R&D strategies apply to residential, commercial, office buildings and community systems, and will impact the building industry in five areas of focus for R&D activities:

- Integrated planning and building design
- Building energy systems
- Building envelope
- Community scale methods
- Real building energy use

The Executive Committee

Overall control of the IEA EBC Programme is maintained by an Executive Committee, which not only monitors existing projects, but also identifies new strategic areas in which collaborative efforts may be beneficial. As the Programme is based on a contract

with the IEA, the projects are legally established as Annexes to the IEA EBC Implementing Agreement. At the present time, the following projects have been initiated by the IEA EBC Executive Committee, with completed projects identified by (*):

Annex 1:	Load Energy Determination of Buildings (*)
Annex 2:	Ekistics and Advanced Community Energy Systems (*)
Annex 3:	Energy Conservation in Residential Buildings (*)
Annex 4:	Glasgow Commercial Building Monitoring (*)
Annex 5:	Air Infiltration and Ventilation Centre
Annex 6:	Energy Systems and Design of Communities (*)
Annex 7:	Local Government Energy Planning (*)
Annex 8:	Inhabitants Behaviour with Regard to Ventilation (*)
Annex 9:	Minimum Ventilation Rates (*)
Annex 10:	Building HVAC System Simulation (*)
Annex 11:	Energy Auditing (*)
Annex 12:	Windows and Fenestration (*)
Annex 13:	Energy Management in Hospitals (*)
Annex 14:	Condensation and Energy (*)
Annex 15:	Energy Efficiency in Schools (*)
Annex 16:	BEMS 1- User Interfaces and System Integration (*)
Annex 17:	BEMS 2- Evaluation and Emulation Techniques (*)
Annex 18:	Demand Controlled Ventilation Systems (*)
Annex 19:	Low Slope Roof Systems (*)
Annex 20:	Air Flow Patterns within Buildings (*)
Annex 21:	Thermal Modelling (*)
Annex 22:	Energy Efficient Communities (*)
Annex 23:	Multi Zone Air Flow Modelling (COMIS) (*)
Annex 24:	Heat, Air and Moisture Transfer in Envelopes (*)
Annex 25:	Real time HVAC Simulation (*)
Annex 26:	Energy Efficient Ventilation of Large Enclosures (*)
Annex 27:	Evaluation and Demonstration of Domestic Ventilation Systems (*)
Annex 28:	Low Energy Cooling Systems (*)
Annex 29:	Daylight in Buildings (*)
Annex 30:	Bringing Simulation to Application (*)
Annex 31:	Energy-Related Environmental Impact of Buildings (*)

Annex 32:	Integral Building Envelope Performance Assessment (*)	Annex 57:	Evaluation of Embodied Energy and CO ₂ Equivalent Emissions for Building Construction (*)
Annex 33:	Advanced Local Energy Planning (*)	Annex 58:	Reliable Building Energy Performance Characterisation Based on Full Scale Dynamic Measurements (*)
Annex 34:	Computer-Aided Evaluation of HVAC System Performance (*)	Annex 59:	High Temperature Cooling and Low Temperature Heating in Buildings (*)
Annex 35:	Design of Energy Efficient Hybrid Ventilation (HYBVENT) (*)	Annex 60:	New Generation Computational Tools for Building and Community Energy Systems (*)
Annex 36:	Retrofitting of Educational Buildings (*)	Annex 61:	Business and Technical Concepts for Deep Energy Retrofit of Public Buildings (*)
Annex 37:	Low Exergy Systems for Heating and Cooling of Buildings (LowEx) (*)	Annex 62:	Ventilative Cooling (*)
Annex 38:	Solar Sustainable Housing (*)	Annex 63:	Implementation of Energy Strategies in Communities
Annex 39:	High Performance Insulation Systems (*)	Annex 64:	LowEx Communities - Optimised Performance of Energy Supply Systems with Exergy Principles (*)
Annex 40:	Building Commissioning to Improve Energy Performance (*)	Annex 65:	Long-Term Performance of Super-Insulating Materials in Building Components and Systems (*)
Annex 41:	Whole Building Heat, Air and Moisture Response (MOIST-ENG) (*)	Annex 66:	Definition and Simulation of Occupant Behavior in Buildings (*)
Annex 42:	The Simulation of Building-Integrated Fuel Cell and Other Cogeneration Systems (FC+COGEN-SIM) (*)	Annex 67:	Energy Flexible Buildings (*)
Annex 43:	Testing and Validation of Building Energy Simulation Tools (*)	Annex 68:	Indoor Air Quality Design and Control in Low Energy Residential Buildings (*)
Annex 44:	Integrating Environmentally Responsive Elements in Buildings (*)	Annex 69:	Strategy and Practice of Adaptive Thermal Comfort in Low Energy Buildings (*)
Annex 45:	Energy Efficient Electric Lighting for Buildings (*)	Annex 70:	Energy Epidemiology: Analysis of Real Building Energy Use at Scale
Annex 46:	Holistic Assessment Tool-kit on Energy Efficient Retrofit Measures for Government Buildings (EnERGo) (*)	Annex 71:	Building Energy Performance Assessment Based on In-situ Measurements (*)
Annex 47:	Cost-Effective Commissioning for Existing and Low Energy Buildings (*)	Annex 72:	Assessing Life Cycle Related Environmental Impacts Caused by Buildings (*)
Annex 48:	Heat Pumping and Reversible Air Conditioning (*)	Annex 73:	Towards Net Zero Resilient Energy Public Communities (*)
Annex 49:	Low Exergy Systems for High Performance Buildings and Communities (*)	Annex 74:	Competition and Living Lab Platform (*)
Annex 50:	Prefabricated Systems for Low Energy Renovation of Residential Buildings (*)	Annex 75:	Cost-effective Building Renovation at District Level Combining Energy Efficiency and Renewables (*)
Annex 51:	Energy Efficient Communities (*)	Annex 76:	Deep Renovation of Historic Buildings Towards Lowest Possible Energy Demand and CO ₂ Emissions (*)
Annex 52:	Towards Net Zero Energy Solar Buildings (*)	Annex 77:	Integrated Solutions for Daylight and Electric Lighting (*)
Annex 53:	Total Energy Use in Buildings: Analysis and Evaluation Methods (*)	Annex 78:	Supplementing Ventilation with Gas-phase Air Cleaning, Implementation and Energy Implications
Annex 54:	Integration of Micro-Generation and Related Energy Technologies in Buildings (*)		
Annex 55:	Reliability of Energy Efficient Building Retrofitting - Probability Assessment of Performance and Cost (RAP-RETRO) (*)		
Annex 56:	Cost Effective Energy and CO ₂ Emissions Optimization in Building Renovation (*)		

Annex 79:	Occupant-centric Building Design and Operation
Annex 80:	Resilient Cooling
Annex 81:	Data-Driven Smart Buildings
Annex 82:	Energy Flexible Buildings towards Resilient Low Carbon Energy Systems
Annex 83:	Positive Energy Districts
Annex 84:	Demand Management of Buildings in Thermal Networks
Annex 85:	Indirect Evaporative Cooling
Annex 86:	Energy Efficient Indoor Air Quality Management in Residential Buildings
Annex 87:	Energy and Indoor Environmental Quality Performance of Personalised Environmental Control Systems
Annex 88:	Evaluation and Demonstration of Actual Energy Efficiency of Heat Pump Systems in Buildings
Annex 89:	Ways to Implement Net-zero Whole Life Carbon Buildings
Annex 90:	Low Carbon, High Comfort Integrated Lighting
Annex 91:	Open BIM for Energy Efficient Buildings
Working Group -	Energy Efficiency in Educational Buildings (*)
Working Group -	Indicators of Energy Efficiency in Cold Climate Buildings (*)
Working Group -	Annex 36 Extension: The Energy Concept Adviser (*)
Working Group -	HVAC Energy Calculation Methodologies for Non-residential Buildings (*)
Working Group -	Cities and Communities (*)
Working Group -	Building Energy Codes

www.iea-ebc.org